



VICTORIA UNIVERSITY
MELBOURNE AUSTRALIA

*HIV/AIDS knowledge and attitudes assessment
among women of child-bearing age in South Sudan:
Findings from a Household Survey*

This is the Published version of the following publication

Mude, William, Oguoma, Victor M, Gesesew, Hailay Abrha, Ameyaw, Edward K, Njue, Carolyne, Nyanhanda, Tafadzwa, Adeleye, Adeniyi O, Dune, Tinashe, Kaambwa, Billingsley and Mwanri, Lillian (2020) HIV/AIDS knowledge and attitudes assessment among women of child-bearing age in South Sudan: Findings from a Household Survey. PLoS ONE, 15 (12 December). ISSN 1932-6203

The publisher's official version can be found at
<http://dx.doi.org/10.1371/journal.pone.0243969>
Note that access to this version may require subscription.

Downloaded from VU Research Repository <https://vuir.vu.edu.au/47903/>

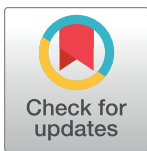
RESEARCH ARTICLE

HIV/AIDS knowledge and attitudes assessment among women of child-bearing age in South Sudan: Findings from a Household Survey

William Mude^{1*}, Victor M. Oguoma², Hailay Abrha Gesesew^{3,4}, Edward K. Ameyaw⁵, Carolyne Njue⁵, Tafadzwa Nyanhanda⁶, Adeniyi O. Adeleye⁷, Tinashe Dune⁸, Billingsley Kaambwa³, Lillian Mwanri³

1 School of Health, Medical and Applied Sciences, Central Queensland University, Sydney, Australia, **2** Health Research Institute, University of Canberra, Canberra, Australia, **3** College of Medicine and Public Health, Flinders University, Adelaide, Australia, **4** School of Health Sciences, Mekelle University, Mekelle, Ethiopia, **5** The Australian Centre for Public and Population Health Research (ACPPHR), School of Public Health, University of Technology Sydney, Sydney, Australia, **6** School of Health, Medical and Applied Sciences, Central Queensland University, Melbourne, Australia, **7** School of Nursing, Midwifery & Social Sciences, Central Queensland University, Mackay, Australia, **8** School of Health Sciences, Western Sydney University, Sydney, Australia

* w.mude@cqu.edu.au



OPEN ACCESS

Citation: Mude W, Oguoma VM, Gesesew HA, Ameyaw EK, Njue C, Nyanhanda T, et al. (2020) HIV/AIDS knowledge and attitudes assessment among women of child-bearing age in South Sudan: Findings from a Household Survey. PLoS ONE 15(12): e0243969. <https://doi.org/10.1371/journal.pone.0243969>

Editor: Godfrey Musuka, Columbia University - MSPH, ZIMBABWE

Received: August 17, 2020

Accepted: November 25, 2020

Published: December 14, 2020

Copyright: © 2020 Mude et al. This is an open access article distributed under the terms of the [Creative Commons Attribution License](https://creativecommons.org/licenses/by/4.0/), which permits unrestricted use, distribution, and reproduction in any medium, provided the original author and source are credited.

Data Availability Statement: Data cannot be shared publicly because the data is owned by a third party, UNICEF. Data are available from the UNICE Institutional Data Access (contact via website, see URL below) for researchers who meet the criteria for access to confidential data. The process to access the data requires online registration requesting the data and approval from UNICEF to access the data. <https://mics.unicef.org/surveys>.

Abstract

This study assessed the determinants that shape HIV knowledge and attitudes among South Sudanese women by analysing a Multiple Indicator Cluster Survey collected from 9,061 women in 9,369 households. Generalised linear mixed model regression was performed. Fifty percent of respondents were aware of HIV/AIDS, with 21% and 22% exhibiting good knowledge and positive attitudes towards people with HIV/AIDS, respectively. When controlled for individual and community-level variables, younger women (AOR = 1.28, 95% CI: 1.01–1.62), women with primary (AOR = 2.19; 95% CI: 1.86–2.58) and secondary (AOR = 4.48; 95% CI: 3.38–5.93) education, and those living in urban areas (AOR = 1.40; 95% CI: 1.12–1.76) had significantly good knowledge. Women in the richer (AOR = 1.60; 95% CI: 1.08–2.36) and the richest (AOR = 2.02; 95% CI: 1.35–3.02) wealth quintiles had significant positive attitudes towards people with HIV/AIDS. Well-designed social and behavioural campaigns targeting uneducated women and those living in rural and remote settings will enhance knowledge of perceived risk, awareness, and ability to carry out preventive behaviours.

Introduction

Women in South Sudan are disproportionately affected by human immunodeficiency virus/acquired immune deficiency syndrome (HIV/AIDS) [1]. In 2018, approximately 55.6% of adults (aged 15 years and older) living with HIV/AIDS in South Sudan were women [2]. Cases of new infections in young women were about one and half times more than in young men

Funding: The authors received no specific funding for this work.

Competing interests: The authors have declared that no competing interests exist.

[2]. Women in South Sudan have fewer opportunities for education, employment, social and political participation [3]. Lack of access to health information, disparities in sexual relationships and marriages, financial reliance on male partners, and traditional patriarchy are factors that facilitate gender inequalities and women's vulnerability to HIV/AIDS [3, 4].

In 2014, the Joint United Nations Programme on AIDS (UNAIDS) and partners set the 90-90-90 targets to ensure that by 2020, 90% of people living with HIV would know their HIV status, 90% of people diagnosed with HIV would access treatments, and 90% of people on antiretroviral treatment would suppress viral loads [5]. Although there have been efforts in sub-Saharan Africa (SSA) towards achieving the UNAIDS 90-90-90 targets by 2020, little progress has been made to address low HIV/AIDS knowledge among women [6]. A recent finding shows that mother to child transmission knowledge is still low among women in SSA over the last twenty years [7]. The authors reported that while women understood the prevention of HIV/AIDS, they lacked understanding about mother to child transmission. In particular, women with low education, low economic status, and living in rural areas were more likely to lack knowledge about HIV/AIDS [8]. These issues have impeded the progress towards the UNAIDS 90-90-90 targets. In South Sudan, the lack of progress towards the achievement of these targets has even lagged further behind because of civil conflicts [1, 2].

Lack of HIV/AIDS knowledge can have serious implications for public health interventions to control infection, promote testing, and engage in treatment and care [9, 10]. Despite the efforts to improve HIV/AIDS understanding, there is still stigma and discrimination against people with HIV/AIDS in South Sudan [10]. Stigma and discrimination against people with HIV/AIDS inhibit testing, which hinders the achievement of the first UNAIDS target of testing 90% of people with HIV/AIDS by 2020 [11].

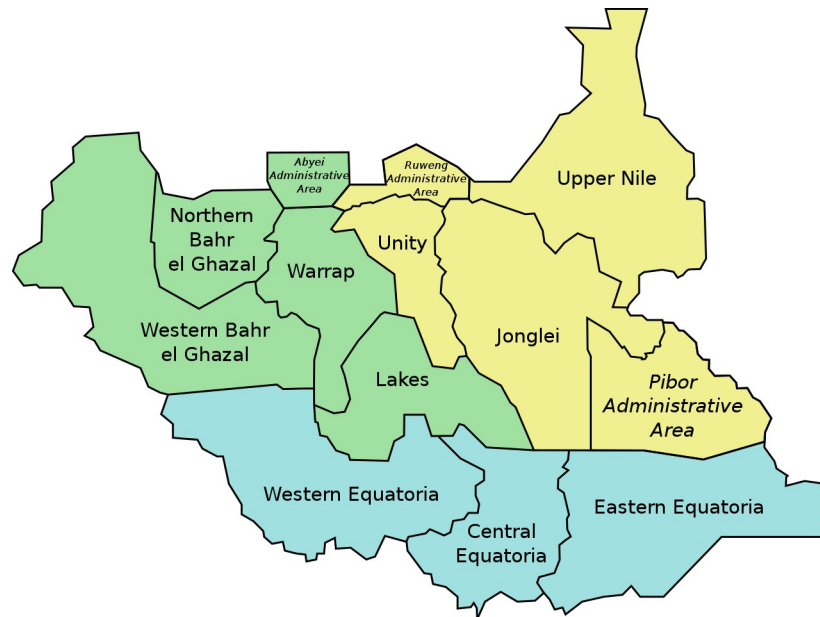
Understanding attitudes toward people with HIV/AIDS is vital to support public health measures to control infection. They promote healthy behaviours such as acceptance of condom use, reduced sexual partners, testing, and engagement in treatment and support seeking [9]. A better understanding of HIV/AIDS in the community can help to plan targeted interventions, adequately use resources, and redress inequity in society by reaching the most vulnerable groups [7]. Knowledge of HIV/AIDS among women is critical to prevent mother to child transmission. Additionally, combating HIV/AIDS is one of the Sustainable Development Goals (SDG 3) and calls for empowering individuals with HIV/AIDS knowledge to protect themselves [12].

To this end, gaps still exist in the literature on knowledge and attitudes toward people with HIV in different communities around the world. For example, HIV/AIDS knowledge is still low among women in South Sudan, and only 9.8% of women aged 15–24 can correctly identify its sexual means of transmission [2]. There is a need to explore the knowledge and attitudes towards people with HIV/AIDS in South Sudan to support public health measures and redress inequitable health information. We aim to address this gap in the literature by examining HIV/AIDS knowledge and attitudes towards people with HIV/AIDS among women in South Sudan. This information is vitally important to guide public health measures and empower women in South Sudan with HIV/AIDS knowledge. This paper will provide an important reference for future projects relating to HIV/AIDS knowledge and attitudes towards people with HIV/AIDS among women in South Sudan.

Methods

Study design and population

We analysed data for the Multiple Indicators Cluster Surveys (MICS) for South Sudan, known as South Sudan Household Health Survey 2 (SSHHS 2). The SSHHS 2 was conducted between



Map 1. The ten states of South Sudan from where the sample was drawn. Source: Wikipedia.

<https://doi.org/10.1371/journal.pone.0243969.g001>

March and June 2010 across all the ten states of South Sudan to assess health outcome indicators among people aged between 15 and 49 years. The ten states of South Sudan where the sample was drawn from are shown in [Map 1](#). SSHHS 2 is the only and the last large data collected at a national level. Not many HIV/AIDS awareness and programs have been implemented in the last ten years in South Sudan because of the civil wars. The design for the SSHHS 2 was based on the methodology of the MICS 4 [13], which used a two-stage cross-sectional study sampling. Twenty urban and rural areas served as the sampling strata, each state having two strata.

The survey selected 40 clusters, “enumeration areas”, from each state and 25 households per cluster. However, for an unforeseen reason, 39 clusters were drawn from each ‘Jonglei’ and ‘Unity’ states. This meant 975 households were selected from each of the two states. The total final samples included 9,950 households from 398 clusters. Further information about the sample size for the survey, sampling process, data collection techniques, and data quality measurements has been reported elsewhere [14].

The survey identified 9,950 random households of which 9,760 were occupied. Of the occupied households, 9,369 completed interviewer-administered face-to-face interviews, a 96% response rate. The interviewed respondents within each household were 9,069 women aged 15–49 years old (14). For this paper, we analysed health indicators relating to HIV/AIDS knowledge and attitudes towards people with HIV/AIDS among women of childbearing age (15–49 years old) in South Sudan.

Study variables and measurements

Individual or household level covariates. Age, marital status, wealth index quintiles, and education of respondents were individual or household covariates as defined by the literature [15].

Community-level covariates. Place of residence (urban and rural) and the ten states comprising South Sudan were community-level variables.

Outcome variables. HIV knowledge and attitudes towards people with HIV/AIDS were the outcome variables. A nine scale questionnaire on HIV knowledge and a three scale questionnaire on attitudes towards people with HIV/AIDS have previously been used in HIV research literature [16].

The questionnaires asked nine statements to assess HIV knowledge in the context of South Sudan. Only respondents who indicated that they had heard of HIV/AIDS before this survey (that is, answered yes to the first statement) were asked to provide a 'yes' or 'no' response to the following remaining eight statements: (i) HIV can be avoided by having one uninfected partner, (ii) HIV can be avoided by using a condom correctly every time, (iii) People can get HIV through supernatural means, (iv) People can get HIV from mosquito bites, (v) People can get HIV by sharing food with a person who has HIV, (vi) HIV can transfer from mother to child during delivery, (vii) HIV can transfer from mother to child during pregnancy, and (viii) HIV can transfer from mother to child through breastfeeding.

A correct response was scored as one (1) and an incorrect one as zero (0) [17]. Respondents with at least six correct scores (i.e. $\geq 70\%$ correct responses) were considered to have good knowledge about HIV while those with scores of less than 70% were considered not to have good knowledge [18, 19]. Some of the reasons for scores less than 70% were gross misconceptions about HIV transmission, guessing, and just generally inadequate knowledge about HIV [18].

Attitudes towards people with HIV/AIDS were assessed by asking respondents to state 'yes' or 'no' to the following five statements: (i) Am willing to buy fresh vegetables from a shop-keeper with HIV, (ii) A female teacher with HIV should be allowed to teach school children, (iii) Would like HIV status of a family member to remain secret, (iv) The healthy-looking person may have the AIDS virus, and (v) I am willing to care for a person with AIDS in a household.

Statistical analysis

Descriptive statistics were calculated using frequencies and percentages for categorical variables. The 'complex samples procedure' in IBM SPSS 26 for Windows (IBM Corp, Armonk, NY), which accounts for survey-specific procedures for clustering, stratification, and weighting was used in the calculation of basic statistics.

A generalised linear mixed model with a logit link function accounting for sampling weight was used to assess the relationship between knowledge and attitudes towards HIV/AIDS on one hand and individual and community level covariates on the other. The model contains fixed effects for the covariates (level 1) and a random intercept-fixed slope for the cluster (level 2 –variables were the place of residence and state).

We fitted a univariate model for each level 1 covariates and outcomes to assess the relationship between each covariate and outcome. Before fitting multivariable models, a null model (an unconditional model without any covariate) was fitted first to decompose the total variance of HIV knowledge and attitudes between the cluster and level 1 covariates. Model 1 is a multivariable regression of the individual or household level factors, while model 2 further controlled for both the individual and community level factors. For the univariate analyses, estimates of the association between outcomes and individual or community level covariates are reported as odds ratio (OR) and the 95% CI. The multivariable models (Models 1 and 2) are reported as adjusted odds ratio (AOR) and 95% CI.

The analyses also explored the influence of the random effects on the likelihood of HIV knowledge and attitudes among women. The probable cluster random effects are expressed and reported as the area variance (AV), intra-cluster correlation (ICC) [20], median odds ratio

(MOR) [21] and the proportion of change in variance (PCV) [22]. We assessed the goodness of fit for the multivariable models using the deviance residual and Akaike Information Criteria (AIC). The model with the smallest deviance or AIC was taken as the best fitting model. In all analyses, statistical significance was set at $p < 0.05$. The findings were discussed and guided by the World Health Organisation Social Determinants of Health framework [23].

Ethical considerations

For the primary research, the United Nations International Children Education Fund (UNICEF) received ethics approval from the South Sudanese Ministry of Health and the National Bureau of Statistics. Study participants provided informed consent, and the anonymity of information was protected. For the current study, ethical approval was not required as the de-identified data was available on request from the UNICEF's MICS website [14].

Results

Socio-demographic information of respondents

A total of 9,061 women responded to the question about HIV/AIDS, with a mean age of 28.8 (SD: 8.5) years. Table 1 shows the socio-demographic information of the participants. 81% of the respondents were married, 78.9% had no formal education, and 74.4% lived in rural areas.

HIV/AIDS knowledge

Of all study participants, 53.1% were aware of HIV/AIDS, and 21.0% had good knowledge of HIV/AIDS. Middle-aged women (20–34 years) had relatively good knowledge of HIV/AIDS compared to younger women aged 15–19 years old (Table 2). When individual-level factors were controlled for, women aged 20–24 (AOR = 1.32; 95% CI: 1.04–1.67), 25–29 (AOR = 1.29; 95% CI: 1.02–1.64) and 30–34 (AOR = 1.30; 95% CI: 1.01–1.68) years old had significantly good knowledge than women in the 15–19 years old cohorts. However, only women aged 20–24 years old were found to have significantly good knowledge (AOR = 1.28, 95% CI: 1.01–1.62) after accounting for the individual/household and community level factors.

Controlling for individual-level factors for marital status, women in the 'formerly married' (AOR = 1.62; 95% CI: 1.19–2.21) cohorts had significantly good knowledge than women in the 'never married' cohorts. A similar finding (AOR = 1.49; 95% CI: 1.09–2.03) is observed for the 'formerly married' group. After accounting for individual-level factors, women in the middle (AOR = 1.40; 95% CI: 1.10–1.79), richer (AOR = 1.60; 95% CI: 1.25–2.04) and richest (AOR = 2.88; 95% CI: 2.23–3.74) wealth index quintiles had significantly good knowledge compared to women in the poorest wealth index quintiles. However, only women in the richest (AOR = 2.06; 95% CI: 1.60–2.73) wealth index quintiles were found to have a significantly good knowledge when both individual and community-level variables were controlled.

Women with primary (AOR = 2.46; 95% CI: 2.10–2.89) and secondary (AOR = 4.97; 95% CI: 3.75–6.57) education were found to have significantly good knowledge about HIV/AIDS than women with no education when controlled for individual-level factors. A similar finding was observed when both individual and community-level factors were accounted for—women with primary (AOR = 2.19; 95% CI: 1.86–2.58) and secondary (AOR = 4.48; 95% CI: 3.38–5.93) education.

Women in urban areas had more knowledge about HIV/AIDS than women in rural areas. They were 2.83 (95% CI: 2.08–3.83) times more likely to have good knowledge about HIV/AIDS than women in the rural areas and 1.40 (95% CI: 1.12–1.76) times when controlled for both individual and community-level variables. Controlling for both individual and

Table 1. Characteristics of South Sudanese women aged 15–49 years old relating to HIV knowledge (n = 9061) and attitudes (n = 4717) towards people with HIV.

	Weighted*	95% CI
Age (years), mean (SD)	28.8 (8.5)	
Age group, n (%)		
15–19	1342 (14.8)	(14.1–15.6)
20–24	1589 (17.5)	(16.7–18.4)
25–29	2067 (22.8)	(21.9–23.8)
30–34	1489 (16.4)	(15.6–17.3)
35–39	1393 (15.4)	(14.6–16.2)
40–44	626 (6.9)	(6.4–7.5)
45–49	555 (6.1)	(5.6–6.7)
Marital status, n (%)		
Never married	1013 (11.2)	(10.5–11.9)
Currently married	7344 (81.0)	(80.1–81.9)
Formerly married	705 (7.8)	(7.2–8.4)
Wealth index quintiles, n (%)		
Poorest	1724 (19.0)	(18.0–20.1)
Second	1743 (19.2)	(18.3–20.2)
Middle	1796 (19.8)	(18.8–20.8)
Fourth	1856 (20.5)	(19.5–21.5)
Richest	1942 (21.4)	(20.3–22.6)
Education, n (%)		
None	7145 (78.9)	(77.8–79.9)
Primary	1534 (16.9)	(16.1–17.8)
Secondary +	353 (3.9)	(3.4–4.4)
Adult education	29 (0.3)	(0.2–0.5)
Area, n (%)		
Rural	6745 (74.4)	(73.2–75.6)
Urban	2316 (25.6)	(24.4–26.8)
State, n (%)		
Upper Nile	1088 (12.0)	(11.2–12.9)
Warap	1270 (14.0)	(13.1–15.0)
Northern Bahr El Ghazal	778 (8.6)	(8.0–9.2)
Jonglei	1299 (14.3)	(13.4–15.4)
Unity	594 (6.6)	(6.1–7.1)
Lakes	659 (7.3)	(6.8–7.8)
Western Bahr El Ghazal	323 (3.6)	(3.3–3.9)
Eastern Equatoria	1012 (11.2)	(10.4–12.0)
Central Equatoria	1261 (13.9)	(12.9–15.0)
Western Equatoria	777 (8.6)	(7.9–9.3)
Ever heard of HIV/AIDS, n (%)	9061	.
Yes	4816 (53.1)	(51.9–54.4)
No	4245 (46.9)	(45.6–48.1)
Good knowledge, n (%)	9061	.
Yes	1920 (21.2)	(20.2–22.2)
No	7141 (78.8)	(77.8–79.8)
Positive attitudes, n (%)	4717	.
Yes	1039 (22.0)	(20.7–23.4)

(Continued)

Table 1. (Continued)

	Weighted*	95% CI
No	3678 (78.0)	(76.6–79.3)

* Number of valid cases is different from the total count in the crosstabulation table because the cell counts have been rounded.

<https://doi.org/10.1371/journal.pone.0243969.t001>

community-level factors, women in Eastern Equatoria (AOR = 1.66; 95% CI: 1.10–2.51), Central Equatoria (AOR = 2.50; 95% CI: 1.68–3.71) and Western Equatoria (AOR = 3.45; 95% CI: 2.30–5.19) each had significantly good knowledge of HIV/AIDS compared to those in Upper Nile.

Attitudes towards people with HIV/AIDS

Twenty-two percent (22.0%) of the 4,717 respondents assessed for attitudes towards people with HIV/AIDS expressed positive attitudes. When controlled for individual-level variables, women in the middle (AOR = 1.82; 95% CI: 1.23–2.69), richer (OR = 2.24; 95% CI: 1.53–3.27) and richest (OR = 3.06; 95% CI: 2.08–4.49) wealth index quintiles significantly had positive attitudes towards people with HIV/AIDS than respondents in the poorest category (Table 3). However, accounting for both individual and community-level factors found that only women in the richer (AOR = 1.60; 95% CI: 1.08–2.36) and richest (AOR = 2.02; 95% CI: 1.35–3.02) wealth index quintiles had significant positive attitudes compared to women in the poorest group.

A significant difference was also observed in attitudes toward people with HIV/AIDS between respondents with no formal education and respondents with primary and secondary education. For example, women with secondary education were 4.48 (95% CI: 3.38–5.93) times more likely to have positive attitudes towards people with HIV/AIDS than women with no education when controlled for both individual and community-level factors.

Women in urban areas were 2.28 (95% CI: 1.73–3.02) times more likely to have positive attitudes towards people with HIV/AIDS than women in rural areas. After controlling for both individual and community-level variables, women in urban areas (AOR = 1.39; 95% IC: 1.08–1.80) had significant positive attitudes towards people with HIV/AIDS compared to women in rural areas. When controlled for both individual and community-level factors, women in Eastern (AOR = 2.28; 95% CI: 1.43–3.63), Central (AOR = 2.04; 95% CI: 1.33–3.12), and Western (AOR = 2.12; 95% CI: 1.36–3.31) Equatoria states were at least two times more likely to have positive attitudes towards people with HIV/AIDS than women in Upper Nile.

Measures of variation in HIV/AIDS knowledge and attitudes

Table 4 shows the estimates of the cluster level variations in HIV/AIDS knowledge and attitudes. Accounting for both individual/household and community level fixed effects covariates led to a significant variation in HIV/AIDS knowledge (AV = 2.11 in the null model to 0.60 in model 2) and attitudes (AV = 1.30 to 0.46 in model 2). This indicates that 71.56% and 64.62% of the contextual variation in HIV/AIDS knowledge and attitudes at the cluster-level, respectively, is attributable to the characteristics of the individual/household and community. The estimates of the intra-cluster correlation (ICC) indicate that in the fully adjusted model with both individual and community-level factors, about 15% and 12% of the total variance of HIV/AIDS knowledge and attitudes, respectively, remain unexplained. The Median Odds Ratio (MOR) indicates a 2-fold and 76% increase in the odds for HIV/AIDS knowledge and

Table 2. Univariable and multivariable binary logistic regression for HIV knowledge (n = 9061) among women in South Sudan.

	n (%)	Univariate				Model 1: Multivariable				Model 2: Multivariable			
		OR	95% CI		p-value	AOR	95% CI		p-value	AOR	95% CI		p-value
Age													
15–19	304 (22.7)	ref	ref	ref	.	ref	ref	ref	.	ref	ref	ref	.
20–24	402 (25.3)	1.24	1.01	1.52	0.036	1.32	1.04	1.67	0.020	1.28	1.01	1.62	0.041
25–29	440 (21.3)	1.11	0.91	1.35	0.295	1.29	1.02	1.64	0.038	1.25	0.98	1.59	0.068
30–34	301 (20.2)	1.06	0.86	1.31	0.586	1.30	1.01	1.68	0.042	1.27	0.98	1.63	0.070
35–39	259 (18.6)	0.90	0.72	1.12	0.332	1.17	0.90	1.52	0.231	1.13	0.87	1.46	0.376
40–44	111 (17.7)	0.81	0.62	1.08	0.151	1.03	0.75	1.41	0.857	0.97	0.70	1.33	0.837
45–49	85 (15.3)	0.66	0.49	0.89	0.007	0.89	0.64	1.24	0.494	0.83	0.59	1.16	0.265
Marital status													
Never married	245 (24.2)	ref	ref	ref	.	Ref	ref	ref	.	ref	ref	ref	.
Currently married	1454 (19.8)	0.99	0.82	1.19	0.889	1.25	0.98	1.59	0.070	1.23	0.97	1.57	0.092
Formerly married	204 (28.9)	1.16	0.89	1.51	0.267	1.62	1.19	2.21	0.002	1.49	1.09	2.03	0.012
Wealth index quintiles													
Poorest	151 (8.7)	ref	ref	ref	.	ref	ref	ref	.	ref	ref	ref	.
Poorer	187 (10.7)	1.09	0.85	1.40	0.501	1.06	0.83	1.37	0.631	1.03	0.80	1.33	0.825
Middle	293 (16.3)	1.46	1.15	1.86	0.002	1.40	1.10	1.79	0.006	1.25	0.98	1.59	0.076
Richer	446 (24.0)	1.77	1.39	2.26	0.000	1.60	1.25	2.04	0.000	1.27	0.99	1.63	0.059
Richest	826 (42.5)	3.46	2.67	4.48	0.000	2.88	2.23	3.74	0.000	2.09	1.60	2.73	0.000
Education level													
None	1014 (14.2)	Ref	ref	ref	.	ref	ref	ref	.	ref	ref	ref	.
Primary	648 (42.2)	2.40	2.07	2.79	0.000	2.46	2.10	2.89	0.000	2.19	1.86	2.58	0.000
Secondary +	229 (65.0)	5.45	4.15	7.17	0.000	4.97	3.75	6.57	0.000	4.48	3.38	5.93	0.000
Adult education	11 (38.8)	2.64	1.11	6.26	0.028	2.27	0.96	5.40	0.062	2.14	0.89	5.15	0.089
Place of residence													
Rural	1121 (16.6)	ref	ref	ref	ref	ref	ref	.
Urban	782 (33.7)	2.83	2.08	3.83	0.000	1.40	1.12	1.76	0.004
State													
Upper Nile	218 (20.1)	ref	ref	ref	ref	ref	ref	.
Warap	55 (4.3)	0.19	0.11	0.33	0.000	0.31	0.19	0.51	0.000
Northern Bahr El Ghazal	70 (9.0)	0.45	0.27	0.76	0.003	0.67	0.42	1.06	0.086
Jonglei	156 (12.0)	0.56	0.34	0.90	0.017	0.81	0.53	1.24	0.326
Unity	82 (13.8)	0.71	0.42	1.18	0.184	0.98	0.62	1.55	0.941
Lakes	94 (14.3)	0.76	0.46	1.25	0.282	1.02	0.66	1.59	0.916
Western Bahr El Ghazal	76 (23.6)	1.50	0.90	2.52	0.123	1.12	0.70	1.80	0.643
Eastern Equatoria	254 (25.1)	1.44	0.90	2.30	0.133	1.66	1.10	2.51	0.016
Central Equatoria	547 (43.4)	3.68	2.34	5.81	0.000	2.50	1.68	3.71	0.000
Western Equatoria	350 (45.1)	4.24	2.67	6.75	0.000	3.45	2.30	5.19	0.000

ref = reference category.

Note 1: Model 1 examines individual-level explanatory factors. Model 2 examines both individual and community level explanatory factors.

<https://doi.org/10.1371/journal.pone.0243969.t002>

attitudes, respectively when women transitioned from below to above HIV/AIDS knowledge and attitudes in the communities.

Fig 1 shows the caterpillar plot of the random effects with a 95% confidence interval for all 398 clusters in the sample from the null model. Clusters with confidence intervals above zero (0) signify those with an above-average level of knowledge or positive attitudes.

Table 3. Univariable and multivariable binary logistic regression for attitudes (n = 4717) towards people with HIV among women in South Sudan.

	n (%)	Univariate				Model 1: Multivariable				Model 2: Multivariable			
		OR	95% CI		p-value	AOR	95% CI		p-value	AOR	95% CI		p-value
			Lower	Upper			Lower	Upper			Lower	Upper	
Age													
15–19	783 (16.6)	ref	ref	ref	.	ref	ref	ref	.	ref	ref	ref	.
20–24	903 (19.1)	1.23	0.95	1.59	0.111	1.34	0.99	1.80	0.055	1.28	0.95	1.73	0.103
25–29	1065 (22.6)	1.12	0.87	1.44	0.385	1.37	1.01	1.86	0.043	1.31	0.96	1.78	0.089
30–34	728 (15.4)	0.94	0.71	1.25	0.682	1.25	0.90	1.74	0.187	1.17	0.84	1.63	0.355
35–39	695 (14.7)	1.01	0.76	1.34	0.949	1.40	1.00	1.96	0.048	1.29	0.92	1.81	0.134
40–44	301 (6.4)	0.97	0.67	1.39	0.854	1.33	0.89	2.01	0.168	1.21	0.80	1.82	0.371
45–49	242 (5.1)	0.67	0.44	1.02	0.062	0.93	0.59	1.48	0.762	0.84	0.53	1.33	0.458
Marital status													
Never married	587 (12.5)	ref	ref	ref	.	ref	ref	ref	.	ref	ref	ref	.
Currently married	3707 (78.6)	0.84	0.67	1.06	0.140	0.95	0.70	1.27	0.711	0.94	0.70	1.27	0.687
Formerly married	423 (9.0)	0.97	0.70	1.34	0.848	1.13	0.78	1.65	0.518	1.05	0.72	1.53	0.813
Wealth index quintiles													
Poorest	553 (11.7)	ref	ref	ref	.	ref	ref	ref	.	ref	ref	ref	.
Poorer	626 (13.3)	1.43	0.94	2.18	0.094	1.36	0.89	2.08	0.152	1.17	0.76	1.80	0.477
Middle	825 (17.5)	1.95	1.32	2.88	0.001	1.82	1.23	2.69	0.003	1.41	0.95	2.11	0.092
Richer	1149 (24.3)	2.60	1.78	3.79	0.000	2.24	1.53	3.27	0.000	1.60	1.08	2.36	0.020
Richest	1565 (33.2)	3.94	2.69	5.76	0.000	3.06	2.08	4.49	0.000	2.02	1.35	3.02	0.001
Education level													
None	3073 (65.1)	ref	ref	ref	.	ref	ref	ref	.	ref	ref	ref	.
Primary	1294 (27.4)	1.89	1.58	2.26	0.000	1.80	1.48	2.19	0.000	1.60	1.32	1.95	0.000
Secondary +	329 (7.0)	4.21	3.16	5.62	0.000	3.59	2.66	4.84	0.000	3.17	2.35	4.29	0.000
Adult education	21 (0.4)	5.21	1.87	14.53	0.002	4.24	1.50	11.93	0.006	3.89	1.37	11.07	0.011
Place of residence													
Rural	3105 (65.8)	ref	ref	ref	ref	ref	ref	.
Urban	1612 (34.2)	2.28	1.73	3.02	0.000	1.39	1.08	1.80	0.011
State													
Upper Nile	518 (11.0)	ref	ref	ref	.					ref	ref	ref	.
Warap	265 (5.6)	0.16	0.07	0.37	0.000	0.26	0.11	0.62	0.002
Northern Bahr El Ghazal	320 (6.8)	0.35	0.19	0.67	0.001	0.55	0.29	1.03	0.060
Jonglei	497 (10.5)	0.87	0.52	1.47	0.609	1.29	0.78	2.14	0.324
Unity	229 (4.8)	0.34	0.16	0.70	0.004	0.48	0.23	0.97	0.040
Lakes	288 (6.1)	0.56	0.31	1.03	0.063	0.82	0.46	1.47	0.508
Western Bahr El Ghazal	197 (4.8)	1.55	0.88	2.72	0.131	1.23	0.71	2.15	0.462
Eastern Equatoria	535 (11.3)	1.98	1.21	3.24	0.006	2.28	1.43	3.63	0.001
Central Equatoria	1162 (22.6)	2.40	1.53	3.76	0.000	2.04	1.33	3.12	0.001
Western Equatoria	706 (15.0)	2.17	1.37	3.46	0.001	2.12	1.36	3.31	0.001

ref = reference category.

Note 2: Model 1 examines individual-level explanatory factors. Model 2 examines both individual and community level explanatory factors. Bolded text indicates significant findings.

<https://doi.org/10.1371/journal.pone.0243969.t003>

Discussion

Across the world, women are known to be disproportionately affected by HIV/AIDS due to multiple vulnerability factors including socio-cultural inequity, poverty and other known

Table 4. Measures of variation in HIV knowledge and attitudes.

	Null Model		Model 1		Model 2	
	Knowledge	Attitudes	Knowledge	Attitudes	Knowledge	Attitudes
AV	2.11	1.30	1.07	0.78	0.60	0.46
ICC	0.39	0.28	0.25	0.19	0.15	0.12
MOR	5.27	3.39	2.92	2.36	2.01	1.76
PCV [#]	-	-	49.29	40.0	71.56	64.62

AV = area variance (i.e., variance of the random effect); ICC = intra-cluster correlation; MOR = median odds ratio; PCV proportional change in variance; #null model vs model 1 or model 2.

<https://doi.org/10.1371/journal.pone.0243969.t004>

social determinants of health, demanding the prioritisation of women in HIV/AIDS research [23, 24]. Women in SSA particularly remain the most disproportionately affected [25]. The current study provides insights into the knowledge and attitudes concerning HIV/AIDS among 9,061 South Sudanese women. We found that only 53.1% of the study respondents “ever heard of HIV/AIDS”. This figure is lower than in most African countries [8, 26], which could be explained by the fact that South Sudan is a fragile state and experienced protracted civil wars [1].

Social determinants, including a higher level of education and improved level of wealth, were among the factors found to increase the likelihood of women’s good knowledge and positive attitudes toward people living with HIV/AIDS. The finding shows that 71.5% of the contextual variation in HIV/AIDS knowledge at the cluster level was due to individual/household and community characteristics. This shows that factors in which people are born, work and live can shape their access to health information [23, 27]. As noted within the Sustainable Development Goals (SDG 3), addressing health literacy for women and girls is central to ensuring holistic health and addressing poverty that perpetuates HIV/AIDS in developing nations [28].

In this study, determinants such as income, education and the settings (states or rural vs urban) where respondents lived seemed to have acted together in a powerful way to shape their HIV/AIDS knowledge and attitudes [27]. An interesting observation was that people from the three states in the Equatoria region had higher odds of HIV knowledge and positive attitudes towards people living with HIV than in the other states. It is possible that the relatively high prevalence of HIV in the Equatoria region could have contributed to the differences seen in knowledge and attitudes towards people living with HIV compared to the other states

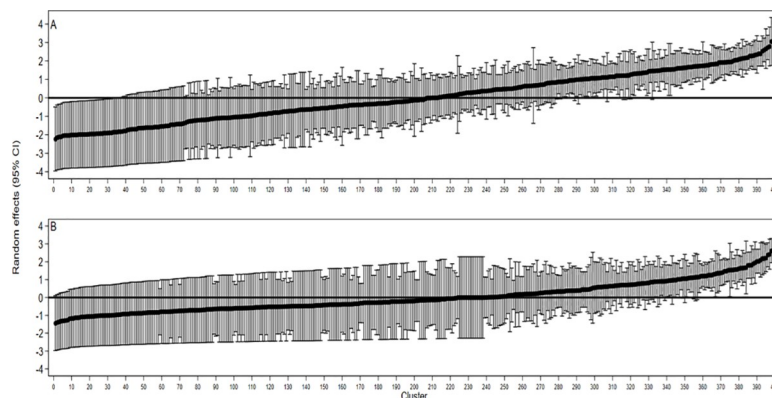


Fig 1. Cluster level differences in A) Knowledge level and B) Attitudes.

<https://doi.org/10.1371/journal.pone.0243969.g002>

[29]. The observed knowledge of HIV/AIDS is anticipated considering that South Sudan recently had independence (2011) with civil unrest and structural drawbacks [30]. As a low-income country with a fragile health system, South Sudan can enhance HIV/AIDS knowledge through collaborating with local communities to implement community-based HIV/AIDS education campaigns [31].

Twenty two percent (22.0%) of respondents expressed positive attitudes toward persons with HIV/AIDS. This finding is in line with previous evidence which reported that 90.6% of participants in South Sudan had one or more negative beliefs toward persons living with HIV/AIDS [32]. Realising that the rates of good knowledge (21.0%) are similar to positive attitudes (22.0%) suggests that interventions to yield positive attitudes toward persons with HIV/AIDS ought to address knowledge and recognise the different contextual factors that shape the uptake of public health information [31]. Marginal positive attitudes can pose critical adverse implications on treatment and spread of the virus. This is more critical for South Sudan, given the complex determinants and fragile healthcare system [30].

HIV/AIDS stigma and discrimination are well-known factors that impact individuals living with HIV/AIDS. It can prevent them from engaging actively in society, disrupting the functioning of communities and hampering HIV/AIDS prevention and treatment efforts [33]. HIV/AIDS stigma can result in some people concealing their HIV status from family members or employers due to fear of being labelled as 'immoral' or losing their jobs [34]. A previous cross-sectional study in South Sudan found that 70% of HIV/AIDS negative participants labelled persons living with the virus shameful and uncultured because they were thought to have multiple sexual partners [34]. Notably, women experienced higher levels of stigmatisation compared to men with more dire consequences considering patriarchal systems where women are expected, and often need, to rely on men for their basic life needs [35]. As such, negative attitudes may inhibit testing and deter persons living with HIV from disclosing their status, promoting the transmission of the virus [36]. HIV/AIDS campaigns need to highlight the stigma of persons with HIV and how such attitudes can impact prevention efforts.

Women with secondary or higher levels of education exhibited good knowledge of HIV/AIDS compared to those without formal education. Our finding supports existing literature linking good knowledge of HIV/AIDS and positive attitudes toward persons living with HIV/AIDS to high education [37, 38], indicating that education is an important determinant. Merakou, Costopoulos [39] highlighted that spending more years in education results in enhanced HIV/AIDS knowledge, which agrees with our findings. Increased education is a significant determinant of women's empowerment and access to health information and services, which improves their capacity to navigate health systems for themselves and the people they care for [28]. Based on our findings, interventions must strive at developing HIV/AIDS knowledge while prioritising persons who have no formal education in order to bridge the knowledge and attitudinal disparity between the educated and the uneducated. This can be achieved through easily accessible mass media platforms like radio, which have proven effective in SSA [40].

Urban residents demonstrated good knowledge and positive attitudes toward persons living with HIV/AIDS compared with rural residents. This is consistent with evidence supporting the positive association between urban residence and having comprehensive HIV/AIDS knowledge and positive attitudes toward persons with HIV/AIDS [26]. Women in urban locations may have easy access to mass media campaigns and the positive net effect of social networks than rural residents [26]. For instance, in South Sudan, health infrastructure and human resource for health are skewed in favour of urban locations [41]. Urban women are more likely to have mainstream employment, education and increased exposure to health information that empowers HIV testing and management [26]. This disparity necessitates the need for concerted effort to prioritise rural locations in achieving equitable HIV knowledge

and change negative attitudes toward persons with HIV/AIDS. The regional differences demonstrate the disproportionate variation in social determinants of health, including health resources and access to health information [26, 41].

Strengths and limitations

Because of the cross-sectional design, causal effect between the socio-demographic characteristics, knowledge on HIV and attitudes toward persons with HIV/AIDS cannot be established. It is also important to acknowledge that South Sudan has been under protracted civil unrest which may also have had impacted the quality of the collected data; hence, the findings should be interpreted cautiously. We also acknowledge that the exclusion of men from the current analysis is also a limitation as the comparison between gender towards HIV knowledge and attitudes might have demonstrated additional differences between men and women. Notwithstanding, the study provides critical findings needed to support public health measures to address inequitable health information on HIV in South Sudan. The findings can be used to guide public health measures that empower women in South Sudan with HIV/AIDS knowledge. The use of a national dataset with a response and a completion rate of 96% and 78% respectively shows the representativeness and the validity of the data, which support the generalisation of our findings.

Conclusions and recommendations

Despite significant efforts made in SSA towards the UNAIDS 90-90-90 targets by 2020, it is obvious that the low HIV/AIDS knowledge among women as demonstrated in this paper will continue to hamper the efforts and reduce achievement that could potentially be made addressing HIV in this nation. The current study findings demonstrate that women in South Sudan generally have less knowledge and negative attitudes toward persons living with HIV/AIDS. Our study shows that women's HIV/AIDS knowledge and attitudes toward people living with HIV in South Sudan are shaped by the social determinants of health, including poverty, education, and geographical settings where they live. Additionally, given the protracted civil conflicts that have existed in South Sudan, different structural, cultural, and political factors would have come into play across different groups of women impacting access to health information. It is also reasonable to hypothesise that HIV interventions that may have been provided to South Sudan may have disproportionately been delivered for urban and educated, with the poor rural and uneducated communities been left out which is a health inequity issue. Our own experiences inform that HIV interventions and campaigns, are most often prepared and delivered from urban settings and do not improve the health outcomes of the rural populations, putting rural populations at a disadvantage relative to their urban counterparts. We also draw from the findings for evidence of the necessity of developing policies and practices that address socioecological issues including culture, education and poverty to narrow the widening knowledge gap between urban and rural residents as well as educated against non-educated women. Our findings also provide evidence for health sector policies and programmes to enhance women and girls' empowerment to improve literacy level and specifically to develop gender-based access to health interventions, including addressing structural interventions aimed at reducing gender inequities. Additionally, frameworks such as human rights and in mobilising communities will contribute to health equity. Removing gender-based health inequities and protecting the rights of all people are crucial steps to achieving universal access goals and health-related Sustainable Development Goal targets.

Additionally, understanding the South Sudan women's attitude and knowledge towards HIV/AIDS and its impact is vital to support public health measures to control infection. The National Strategic Plan (NSP) for HIV/AIDS Strategic framework prioritises targeted

approaches to HIV and AIDS awareness and support in South Sudan. To address the policy recommendations, an HIV/AIDS Communication Strategy is urgently required to brand and position communication programming in terms of knowledge, skills and self-efficacy, capacity, coordination, policy support, and utilisation of services and improve engagement within constituencies and stakeholders in South Sudan. Guidelines, protocols for engagement with the constituencies and stakeholders are required to promote the synergised implementation of the strategy. The development and production of targeted information tools and materials responsive to the needs of different segments of the population and disseminated through effective channels will further add value to closing knowledge gaps, correcting misconceptions, building support, acceptance, and utilisation of HIV/AIDS services. As part of its preventive health strategy, the government should also leverage campaigns encouraging people to go for annual medical tests, treatment adherence, and peer-to-peer and inter-personal communication programs to promote testing and engage in treatment and care. Coordination and integration of communication messaging will increase coherence, synergy and strengthen the capacity of the implementing partners, and using themed strategic communication campaigns, address regional, religious, and cultural differences and needs in a way and language the people understand. Additionally, advocacy among decisionmakers and influential leaders as well as mainstreaming HIV messaging with other key messages can bring out the benefits of an all-inclusive strategic approach to increase communication uptake among all the population groups in South Sudan and policy level systems support.

These findings provide evidence for policymakers and health advocates to holistically understand the unique determinants of health situations for women in South Sudan. As such, well designed and coordinated approaches utilising humanitarian approaches, targeting rural and uneducated women are also required to achieve progress towards the 90-90-90 targets. The similar proportion between HIV knowledge and attitudes indicate that interventions aimed at improving HIV/AIDS knowledge are essential pre-requisites for achieving desirable change in attitudes towards persons living with HIV in South Sudan.

Author Contributions

Conceptualization: William Mude.

Data curation: William Mude.

Formal analysis: William Mude, Victor M. Oguoma, Hailay Abrha Gesesew, Billingsley Kaambwa.

Investigation: William Mude.

Methodology: William Mude, Victor M. Oguoma, Hailay Abrha Gesesew, Billingsley Kaambwa.

Project administration: William Mude.

Resources: William Mude.

Software: William Mude.

Writing – original draft: William Mude, Victor M. Oguoma, Hailay Abrha Gesesew, Edward K. Ameyaw, Carolyne Njue, Tafadzwa Nyanhanda, Adeniyi O. Adeleye, Tinashe Dune, Billingsley Kaambwa, Lillian Mwanri.

Writing – review & editing: William Mude, Carolyne Njue, Tafadzwa Nyanhanda, Lillian Mwanri.

References

1. Jervase A, Tahir H, Modi JK, Almobarak AO, Mital D, Ahmed MHJPHE. HIV/AIDS in South Sudan past, present, and future: a model of resilience in a challenging context. 2018; 2:31.
2. UNAIDS. UNAIDS South Sudan: UNAIDS; 2018 [Available from: <http://www.unaids.org/en/regionscountries/countries/southsudan>].
3. Edward JK. A strategy for achieving gender equality in South Sudan. J Weekly Review Juba: The Sudd Institute. 2014.
4. Ali NM. Women and HIV/AIDS in South Sudan. In: Bubenzer F, Stern O, editors. Hope, Pain, Patience: The Lives of Women in South Sudan. Sunnyside/Auckland Park, South Africa: Fanele; 2012. p. 111–37.
5. UNAIDS. 90-90-90: An ambitious treatment target to help end the AIDS epidemic: UNAIDS; 2014 [Available from: <https://www.unaids.org/en/resources/909090>].
6. Levi J, Raymond A, Pozniak A, Vernazza P, Kohler P, Hill AJBgh. Can the UNAIDS 90-90-90 target be achieved? A systematic analysis of national HIV treatment cascades. 2016; 1(2):e000010. <https://doi.org/10.1136/bmjgh-2015-000010> PMID: 28588933
7. Dai X, Wang H. Change in knowledge and attitude about HIV/AIDS in sub-Saharan Africa, 1990–2017: an analysis of national survey data. The Lancet Global Health. 2019; 7:S4.
8. Burgoyne AD, Drummond PD. Knowledge of HIV and AIDS in women in sub-Saharan Africa. African Journal of Reproductive Health. 2008; 12(2):14–31. PMID: 20695040
9. Alwano MG, Bachanas P, Block L, Roland M, Sento B, Behel S, et al. Increasing knowledge of HIV status in a country with high HIV testing coverage: Results from the Botswana Combination Prevention Project. 2019; 14(11).
10. Mach BS. HIV/AIDS knowledge, attitudes and practices among women in South Sudan based on multiple indicator cluster survey, 2010. Journal of Health Research. 2017; 31(Suppl. 1):s65–s74.
11. Sullivan MC, Rosen AO, Allen A, Benbella D, Camacho G, Cortopassi AC, et al. Falling Short of the First 90: HIV Stigma and HIV Testing Research in the 90–90–90 Era. Springer; 2020.
12. Setswe G, Mabaso M. Millennium Development Goal 6: combat HIV/AIDS, malaria and other diseases 2015. 2016.
13. UNICEF. MICS 4 Tools 2010 [Available from: <https://mics.unicef.org/tools?round=mics4>].
14. Ministry of Health and National Bureau of Statistics. South Sudan Household Survey Juba, South Sudan: Ministry of Health; 2013 [Available from: <https://mics.unicef.org/surveys>].
15. Begg MD, Parides MK. Separation of individual-level and cluster-level covariate effects in regression analysis of correlated data. J Statistics in medicine. 2003; 22(16):2591–602. <https://doi.org/10.1002/sim.1524> PMID: 12898546
16. Alwafi HA, Meer AM, Shabkah A, Mehdawi FS, El-Haddad H, Bahabri N, et al. Knowledge and attitudes toward HIV/AIDS among the general population of Jeddah, Saudi Arabia. Journal of Infection Public Health. 2018; 11(1):80–4. <https://doi.org/10.1016/j.jiph.2017.04.005> PMID: 28579268
17. Banagi YA, Unnikrishnan B, Ramapuram JT, Thapar R, Mithra P, Madi D, et al. HIV-related knowledge among PLWHA attending a tertiary care hospital at Coastal South India—a facility-based study. Journal of the International Association of Providers of AIDS Care. 2017; 16(6):615–9. <https://doi.org/10.1177/2325957417742671> PMID: 29187077
18. Carey MP, Schroder KE, prevention. Development and psychometric evaluation of the brief HIV Knowledge Questionnaire. J AIDS education. 2002; 14(2):172–82.
19. Kalichman SC, Simbayi LC, Jooste S, Toefy Y, Cain D, Cherry C, et al. Development of a brief scale to measure AIDS-related stigma in South Africa. 2005; 9(2):135–43. <https://doi.org/10.1007/s10461-005-3895-x> PMID: 15933833
20. Snijders T, Bosker R. Multilevel analysis: an introduction to basic and advanced multilevel modeling. London: Sage; 1999.
21. Larsen K, Merlo J. Appropriate assessment of neighborhood effects on individual health: integrating random and fixed effects in multilevel logistic regression. American journal of epidemiology. 2005; 161(1):81–8. <https://doi.org/10.1093/aje/kwi017> PMID: 15615918
22. Merlo J, Chaix B, Ohlsson H, Beckman A, Johnell K, Hjerpe P, et al. A brief conceptual tutorial of multilevel analysis in social epidemiology: using measures of clustering in multilevel logistic regression to investigate contextual phenomena. Journal of Epidemiology & Community Health. 2006; 60(4):290–7. <https://doi.org/10.1136/jech.2004.029454> PMID: 16537344
23. WHO. Social determinants of health 2018 [Available from: http://www.who.int/topics/social_determinants/en].

24. Barkan SE, Melnick SL, Preston-Martin S, Weber K, Kalish LA, Miotti P, et al. The women's interagency HIV study. *Epidemiology*. 1998;117–25. PMID: [9504278](#)
25. Ramjee G, Daniels B. Women and HIV in sub-Saharan Africa. *AIDS research therapy*. 2013; 10(1):30. <https://doi.org/10.1186/1742-6405-10-30> PMID: [24330537](#)
26. Teshome R, Youjie W, Habte E, Kasm N. Comparison and association of comprehensive HIV/AIDS knowledge and attitude towards people living with HIV/AIDS among women aged 15–49 in three east African countries: Burundi, Ethiopia and Kenya. *J AIDS Clin Res*. 2016; 7(4):1–8.
27. Taylor J, Haintz GL. Influence of the social determinants of health on access to healthcare services among refugees in Australia. *Australian journal of primary health*. 2018; 24(1):14–28. <https://doi.org/10.1071/PY16147> PMID: [29232545](#)
28. Amoah PA, Phillips DRJPh. Health literacy and health: Rethinking the strategies for universal health coverage in Ghana. 2018; 159:40–9. <https://doi.org/10.1016/j.puhe.2018.03.002> PMID: [29729490](#)
29. Baba SP, Jervase A, Centers for Disease Control and Prevention. Investigation of high HIV prevalence in Western Equatoria State—South Sudan, 2012. *MMWR Morb Mortal Wkly Rep*. 2013;62(22):453–4.
30. Jones A, Howard N, Legido-Quigley H. Feasibility of health systems strengthening in South Sudan: a qualitative study of international practitioner perspectives. *BMJ Open*. 2015; 5(12):e009296. <https://doi.org/10.1136/bmjopen-2015-009296> PMID: [26700280](#)
31. Downie R. The state of public health in south Sudan: critical condition: CSIS; 2012.
32. Courtney LP, Goco N, Woja J, Farris T, Cumiskey C, Smith E, et al. HIV prevalence and behavioral risk factors in the Sudan People's Liberation Army: Data from South Sudan. *PloS One*. 2017; 12(11). <https://doi.org/10.1371/journal.pone.0187689> PMID: [29161275](#)
33. Skinner D, Mfecane S. Stigma, discrimination and the implications for people living with HIV/AIDS in South Africa. *Sahara-j: Journal of Social Aspects of HIV/AIDS*. 2004; 1(3):157–64. <https://doi.org/10.1080/17290376.2004.9724838> PMID: [17601003](#)
34. Poni-Gore R, Lino EO, Alex OA, Simaya RJ, Bion AJ, Jette AJ, et al. Stigma and Discrimination against People Living with HIV in Juba, South Sudan. 2015.
35. Gilbert L, Walker LJH, community scit. 'My biggest fear was that people would reject me once they knew my status. . .': stigma as experienced by patients in an HIV/AIDS clinic in Johannesburg, South Africa. 2010; 18(2):139–46.
36. Liu H, Hu Z, Li X, Stanton B, Naar-King S, Yang H. Understanding interrelationships among HIV-related stigma, concern about HIV infection, and intent to disclose HIV serostatus: a pretest–posttest study in a rural area of eastern China. *AIDS Patient Care STDs*. 2006; 20(2):133–42. <https://doi.org/10.1089/apc.2006.20.133> PMID: [16475894](#)
37. Khalid F, Mohammed A, Farah E. Knowledge and Awareness of AIDS among University of Kassala Students, Sudan. *Community Med Health Educ*. 2013; 3(201):2161–0711. 1000201.
38. El Fadl RKA, Abdelmoety A, Farahat Z, Hussein MA. Assessing the levels of HIV-related knowledge and attitudes toward HIV-infected patients among undergraduate dental students: a cross-sectional study. *HIV/AIDS*. 2019; 11:83. <https://doi.org/10.2147/HIV.S195984> PMID: [31114391](#)
39. Merakou K, Costopoulos C, Marcopoulou J, Kourea-Kremastinou J. Knowledge, attitudes and behaviour after 15 years of HIV/AIDS prevention in schools. *The European Journal of Public Health*. 2002; 12(2):90–3. <https://doi.org/10.1093/eurpub/12.2.90> PMID: [12073759](#)
40. Jesmin SS, Chaudhuri S, Abdullah S. Educating women for HIV prevention: Does exposure to mass media make them more knowledgeable? *Health Care for Women International*. 2013; 34(3–4):303–31. <https://doi.org/10.1080/07399332.2012.736571> PMID: [23394327](#)
41. WHO. South Sudan: Country Responses 2020 [Available from: <https://www.who.int/workforcealliance/countries/ssd/en/>].